

# 600 Busse Road Elk Grove Village, IL 60007

Prime Warehouse / Showroom Building Available for SALE



PROPERTY FACT SHEET



Photo of Building from Busse Road

**PRICE REDUCED**  
**\$735,000**  
Bank Appraised at \$750,000

## PROPERTY HIGHLIGHTS

- Zoned B2
- 19,247 SF building on a 1.29 acre (56,192 SF) lot
  - Lot allows for expansions to the building and/or parking
- SHOWROOM/OFFICE:
  - Showroom/office currently built out
  - 4,166 SF concrete mezzanine above
  - Separate HVAC unit
- WAREHOUSE:
  - 24' high ceilings throughout
  - Heated
  - Racking throughout
- LOADING:
  - 2 heated interior docks - 1 with a self-leveler
  - Additional at-grade dock
- Skylights throughout building
- 36 parking spaces (expandable)
- Great visibility
- 30,700 VPD on Busse Road
- 1/2 mile south of Interstate 90
- 7 miles from Chicago O'Hare Airport cargo



Photo of Entrance to Showroom/Office



Bird's Eye of Site Looking West

## DEMOGRAPHIC PROFILE

	1 MILE	3 MILE	5 MILE
Population	6,393	74,320	229,745
Households	2,583	28,944	89,727
Average Household Income	\$53,593	\$77,728	\$83,331
Daytime Employees	22,643	110,022	248,417

CONTACT

**Joe Grody**  
312.254.0724  
jgrody@sierraus.com

**Cyndee Conway**  
312.254.0719  
cconway@sierraus.com

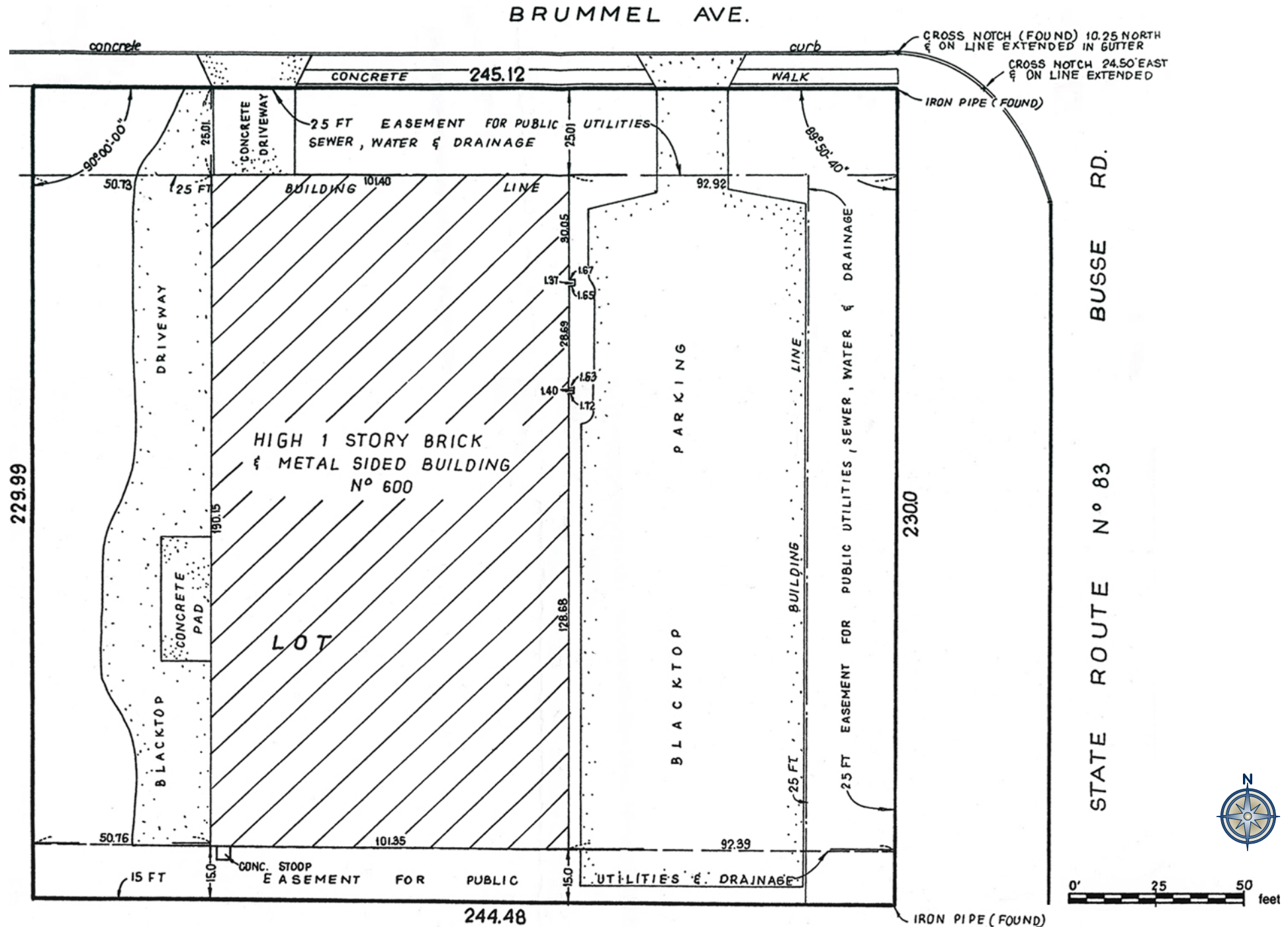
**www.SierraUS.com**  
640 North LaSalle Boulevard • Suite 410  
Chicago, IL 60654  
312.422.7745(fax) • 888.656.7744(toll-free)

# 600 Busse Road

Elk Grove Village, IL 60007  
Prime Warehouse/Showroom Building Available for SALE



PLAT OF SURVEY

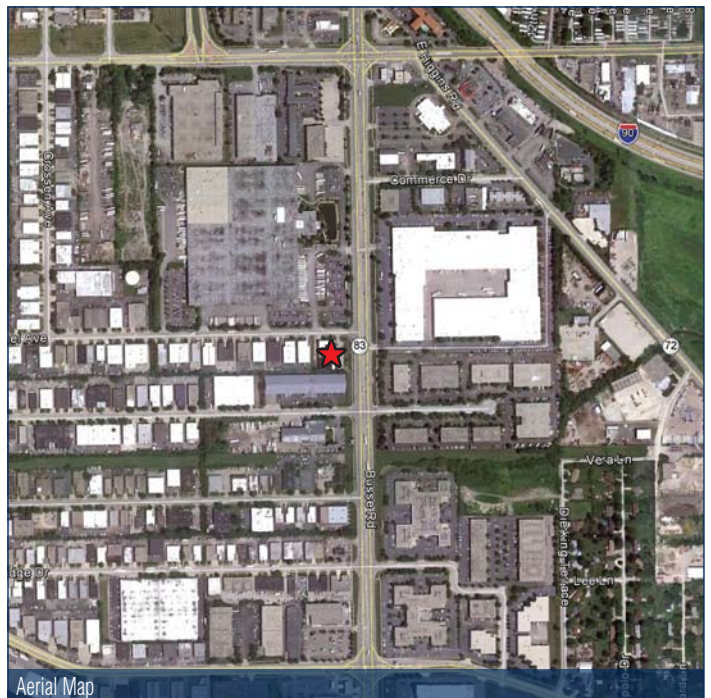
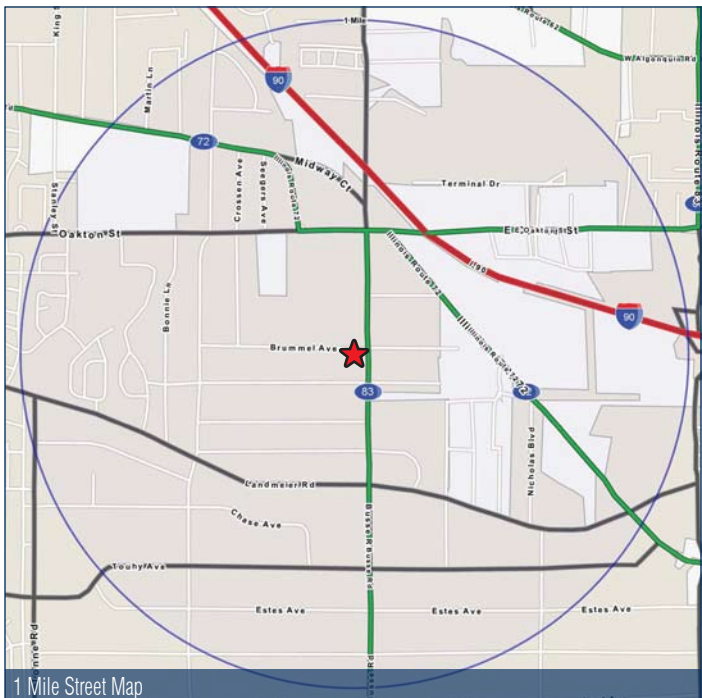
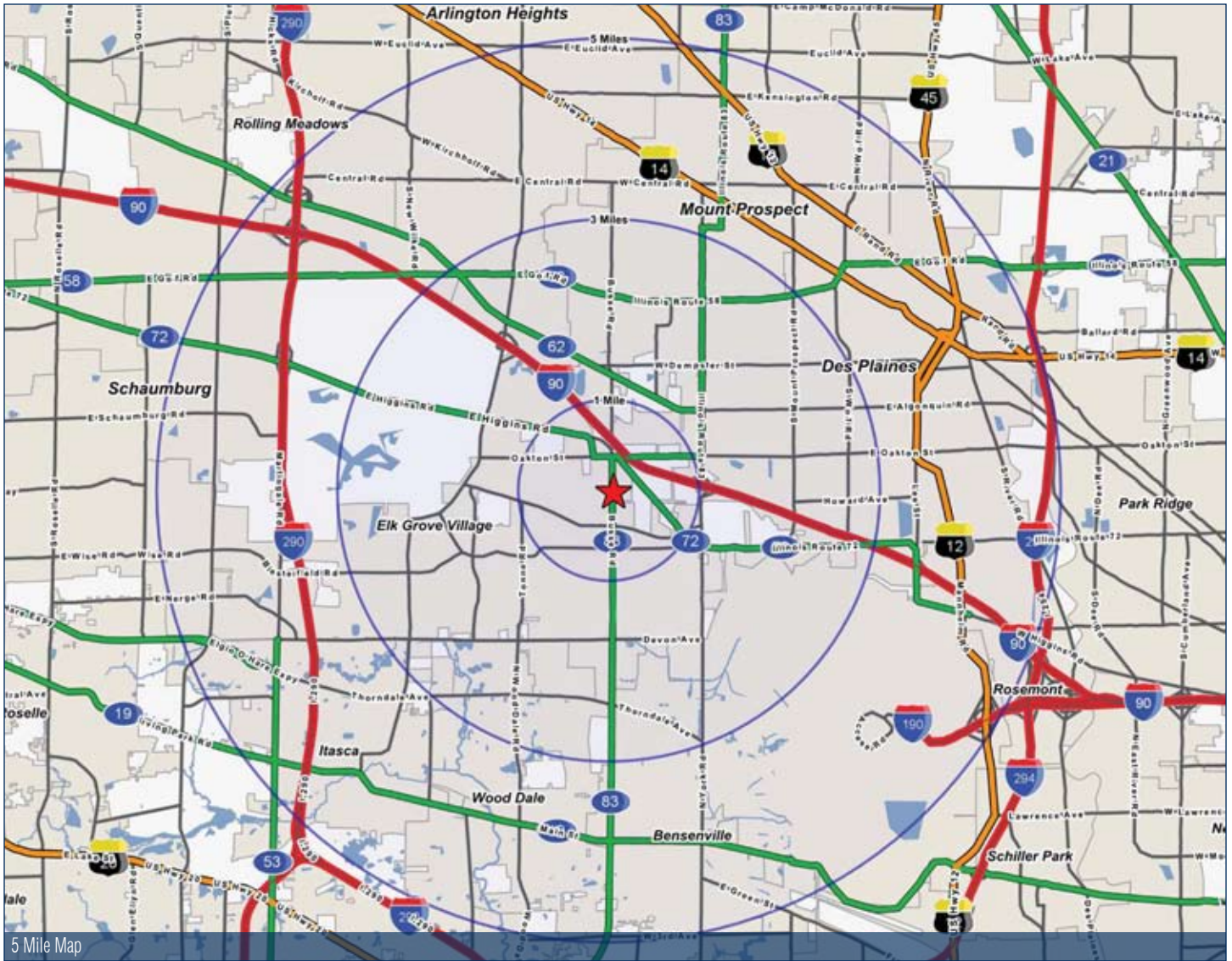


# 600 Busse Road Elk Grove Village, IL 60007

Prime Warehouse/Showroom Building Available for SALE



LOCATION STUDY



# FULL PROFILE

1990 - 2000 Census, 2010 Estimates with 2015 Projections  
 Calculated using Proportional Block Groups



Lat/Lon: 42.01705/-87.96049

**600 Busse Rd.**

**Elk Grove Village, IL**

**1 Mile      3 Miles      5 Miles**

		1 Mile	3 Miles	5 Miles
<b>POPULATION</b>	2010 Estimated Population	6,393	74,320	229,745
	2015 Projected Population	6,929	74,834	232,380
	2000 Census Population	6,239	76,304	235,654
	1990 Census Population	5,491	72,218	219,665
	Historical Annual Growth 1990 to 2010	0.8%	0.1%	0.2%
	Projected Annual Growth 2010 to 2015	1.7%	0.1%	0.2%
<b>HOUSEHOLDS</b>	2010 Est. Households	2,583	28,944	89,727
	2015 Proj. Households	2,866	29,284	91,885
	2000 Census Households	2,482	29,659	90,792
	1990 Census Households	2,293	28,211	83,928
	Historical Annual Growth 1990 to 2010	0.6%	0.1%	0.3%
	Projected Annual Growth 2010 to 2015	2.2%	0.2%	0.5%
<b>AGE</b>	2010 Est. Population 0 to 9 Years	13.6%	12.3%	12.3%
	2010 Est. Population 10 to 19 Years	12.4%	12.2%	12.2%
	2010 Est. Population 20 to 29 Years	17.0%	13.7%	12.1%
	2010 Est. Population 30 to 44 Years	23.6%	21.6%	21.5%
	2010 Est. Population 45 to 59 Years	19.1%	21.1%	21.8%
	2010 Est. Population 60 to 74 Years	10.2%	13.5%	13.6%
	2010 Est. Population 75 Years Plus	4.2%	5.6%	6.5%
	2010 Est. Median Age	33.9	37.9	39.0
<b>MARITAL STATUS &amp; SEX</b>	2010 Est. Male Population	52.7%	50.7%	49.7%
	2010 Est. Female Population	47.3%	49.3%	50.3%
	2010 Est. Never Married	33.6%	27.4%	25.5%
	2010 Est. Now Married	42.6%	54.3%	55.3%
	2010 Est. Separated or Divorced	18.3%	12.0%	11.8%
	2010 Est. Widowed	5.5%	6.3%	7.3%
<b>INCOME</b>	2010 Est. HH Income \$200,000 or More	0.8%	3.4%	4.2%
	2010 Est. HH Income \$150,000 to \$199,999	1.4%	3.6%	5.0%
	2010 Est. HH Income \$100,000 to \$149,999	7.2%	14.2%	16.8%
	2010 Est. HH Income \$75,000 to \$99,999	11.4%	16.2%	15.7%
	2010 Est. HH Income \$50,000 to \$74,999	20.7%	22.1%	21.6%
	2010 Est. HH Income \$35,000 to \$49,999	21.7%	15.1%	13.2%
	2010 Est. HH Income \$25,000 to \$34,999	14.1%	9.0%	8.2%
	2010 Est. HH Income \$15,000 to \$24,999	11.5%	8.5%	8.1%
	2010 Est. HH Income \$0 to \$14,999	11.2%	7.8%	7.3%
	2010 Est. Average Household Income	\$53,593	\$77,728	\$83,331
	2010 Est. Median HH Income	\$45,325	\$61,844	\$66,723
	2010 Est. Per Capita Income	\$21,655	\$30,530	\$33,106
	2010 Est. Number of Businesses	1,276	6,239	15,012
2010 Est. Total Number of Employees	22,643	110,022	248,417	

This report was produced using data from private and government sources deemed to be reliable. The information herein is provided without representation or warranty.

# FULL PROFILE

1990 - 2000 Census, 2010 Estimates with 2015 Projections  
 Calculated using Proportional Block Groups



Lat/Lon: 42.01705/-87.96049

**600 Busse Rd.**

**Elk Grove Village, IL**

**1 Mile      3 Miles      5 Miles**

		1 Mile	3 Miles	5 Miles
<b>RACE</b>	2010 Est. White Population	80.5%	81.5%	84.8%
	2010 Est. Black Population	7.6%	5.8%	5.0%
	2010 Est. Asian & Pacific Islander	10.2%	11.4%	8.9%
	2010 Est. American Indian & Alaska Native	0.5%	0.4%	0.3%
	2010 Est. Other Races Population	1.2%	0.9%	1.0%
<b>HISPANIC</b>	2010 Est. Hispanic Population	1,846	14,690	43,180
	2010 Est. Hispanic Population Percent	28.9%	19.8%	18.8%
	2015 Proj. Hispanic Population Percent	30.5%	22.6%	21.6%
	2000 Hispanic Population Percent			
<b>EDUCATION (Adults 25 or Older)</b>	2010 Est. Adult Population (25 Years or Older)	4,194	51,069	159,516
	2010 Est. Elementary (0 to 8)	10.2%	7.0%	6.2%
	2010 Est. Some High School (9 to 11)	8.5%	6.4%	5.8%
	2010 Est. High School Graduate (12)	32.3%	28.0%	27.0%
	2010 Est. Some College (13 to 16)	18.7%	19.7%	19.6%
	2010 Est. Associate Degree Only	7.0%	6.9%	7.0%
	2010 Est. Bachelor Degree Only	17.3%	21.2%	22.7%
	2010 Est. Graduate Degree	6.1%	10.7%	11.7%
<b>HOUSING</b>	2010 Est. Total Housing Units	2,789	31,269	97,200
	2010 Est. Owner Occupied Percent	52.2%	62.0%	69.0%
	2010 Est. Renter Occupied Percent	40.4%	30.6%	23.3%
	2010 Est. Vacant Housing Percent	7.4%	7.4%	7.7%
<b>HOMES BUILT BY YEAR</b>	2000 Homes Built 1999 to 2000	2.0%	0.4%	0.8%
	2000 Homes Built 1995 to 1998	6.2%	1.8%	3.1%
	2000 Homes Built 1990 to 1994	7.6%	3.7%	5.3%
	2000 Homes Built 1980 to 1989	19.1%	10.5%	12.5%
	2000 Homes Built 1970 to 1979	35.3%	30.1%	24.4%
	2000 Homes Built 1960 to 1969	19.2%	35.1%	25.1%
	2000 Homes Built 1950 to 1959	8.6%	14.2%	18.8%
	2000 Homes Built Before 1949	1.9%	4.2%	10.0%
<b>HOME VALUES</b>	2000 Home Value \$1,000,000 or More	-	0.1%	0.1%
	2000 Home Value \$500,000 to \$999,999	-	0.8%	1.0%
	2000 Home Value \$400,000 to \$499,999	0.6%	1.4%	2.0%
	2000 Home Value \$300,000 to \$399,999	2.2%	6.3%	8.2%
	2000 Home Value \$200,000 to \$299,999	15.0%	37.4%	34.4%
	2000 Home Value \$150,000 to \$199,999	58.0%	40.9%	36.9%
	2000 Home Value \$100,000 to \$149,999	21.3%	10.9%	14.8%
	2000 Home Value \$50,000 to \$99,999	2.5%	1.8%	2.3%
	2000 Home Value \$25,000 to \$49,999	-	0.2%	0.1%
	2000 Home Value \$0 to \$24,999	0.5%	0.1%	0.2%
	2000 Median Home Value	\$171,289	\$203,836	\$202,944
	2000 Median Rent	\$719	\$750	\$778

This report was produced using data from private and government sources deemed to be reliable. The information herein is provided without representation or warranty.

# FULL PROFILE

1990 - 2000 Census, 2010 Estimates with 2015 Projections  
 Calculated using Proportional Block Groups



Lat/Lon: 42.01705/-87.96049

**600 Busse Rd.**

**Elk Grove Village, IL**

**1 Mile      3 Miles      5 Miles**

		1 Mile	3 Miles	5 Miles
<b>LABOR FORCE</b>	2010 Est. Labor: Population Age 16+	5,079	59,896	184,737
	2010 Est. Civilian Employed	67.1%	65.1%	64.7%
	2010 Est. Civilian Unemployed	5.2%	4.7%	4.3%
	2010 Est. in Armed Forces	0.1%	0.1%	-
	2010 Est. not in Labor Force	27.6%	30.2%	31.0%
	2010 Labor Force: Males	52.9%	50.3%	49.2%
	2010 Labor Force: Females	47.0%	49.7%	50.8%
<b>OCCUPATION</b>	2000 Occupation: Population Age 16+	3,372	40,110	122,400
	2000 Mgmt, Business, & Financial Operations	12.3%	14.9%	16.8%
	2000 Professional & Related	12.8%	18.7%	19.6%
	2000 Service	13.7%	11.2%	11.0%
	2000 Sales and Office	32.3%	31.6%	31.2%
	2000 Farming, Fishing, and Forestry	0.1%	0.1%	0.1%
	2000 Construction, Extraction, & Maintenance	7.9%	7.6%	7.3%
	2000 Production, Transport, & Material Moving	21.0%	16.0%	14.1%
	2000 Percent White Collar Workers	57.3%	65.2%	67.5%
	2000 Percent Blue Collar Workers	42.7%	34.8%	32.5%
<b>TRANSPORTATION TO WORK</b>	2000 Drive to Work Alone	75.6%	79.2%	79.4%
	2000 Drive to Work in Carpool	16.1%	11.2%	9.2%
	2000 Travel to Work by Public Transportation	3.3%	4.2%	5.8%
	2000 Drive to Work on Motorcycle	-	-	-
	2000 Walk or Bicycle to Work	2.8%	2.6%	2.5%
	2000 Other Means	0.4%	0.6%	0.6%
	2000 Work at Home	1.8%	2.2%	2.6%
<b>TRAVEL TIME</b>	2000 Travel to Work in 14 Minutes or Less	30.9%	27.2%	25.6%
	2000 Travel to Work in 15 to 29 Minutes	38.5%	37.4%	36.2%
	2000 Travel to Work in 30 to 59 Minutes	24.0%	27.9%	29.5%
	2000 Travel to Work in 60 Minutes or More	6.5%	7.4%	8.8%
	2000 Average Travel Time to Work	22.8	24.5	25.3
<b>CONSUMER EXPENDITURE</b>	2010 Est. Total Household Expenditure	\$118 M	\$1.71 B	\$5.57 B
	2010 Est. Apparel	\$5.63 M	\$81.8 M	\$267 M
	2010 Est. Contributions & Gifts	\$6.92 M	\$108 M	\$363 M
	2010 Est. Education & Reading	\$2.95 M	\$46.6 M	\$156 M
	2010 Est. Entertainment	\$6.54 M	\$95.7 M	\$313 M
	2010 Est. Food, Beverages & Tobacco	\$19.4 M	\$272 M	\$878 M
	2010 Est. Furnishings & Equipment	\$5.04 M	\$76.1 M	\$250 M
	2010 Est. Health Care & Insurance	\$8.68 M	\$121 M	\$392 M
	2010 Est. Household Operations & Shelter & Utilities	\$35.2 M	\$510 M	\$1.66 B
	2010 Est. Miscellaneous Expenses	\$2.03 M	\$28.5 M	\$92.3 M
	2010 Est. Personal Care	\$1.73 M	\$24.8 M	\$80.6 M
2010 Est. Transportation	\$24.0 M	\$344 M	\$1.11 B	

This report was produced using data from private and government sources deemed to be reliable. The information herein is provided without representation or warranty.