

# 225 West Hubbard Chicago, IL 60654

Prime Showroom/Office Space Available in the Forefront of the Merchandise Mart



PROPERTY FACT SHEET



Photo of Building from Hubbard Street & Franklin Street Looking Southeast with the Merchandise Mart in the Background

## In the Heart of Chicago's Showroom District



Daytime Photo of Building with the Merchandise Mart in the Background

### PROPERTY HIGHLIGHTS

- 24,265 SF of prime showroom/office space available
  - First Level: 7,153 SF showroom
  - Lower Level: 5,415 SF showroom/office/stock room
  - Second Level: 7,769 SF showroom/office
  - Third Level: 3,928 SF office
- Window displays on first, lower, and second levels are visible from the street
- Entrances on Hubbard Street and Franklin Street
- Building completely renovated in 2003
- Blade signage - visible from the Merchandise Mart

### DEMOGRAPHIC PROFILE

	0.5 MILE	1.0 MILE	1.5 MILE
Population	16,462	75,942	135,656
Households	11,208	46,995	80,324
Average Household Income	\$124,703	\$121,818	\$123,179
Daytime Employees	157,692	516,341	623,176

CONTACT

**Joe Grody**  
312.254.0724  
jgrody@sierraus.com

**Cyndee Conway**  
312.254.0719  
cconway@sierraus.com

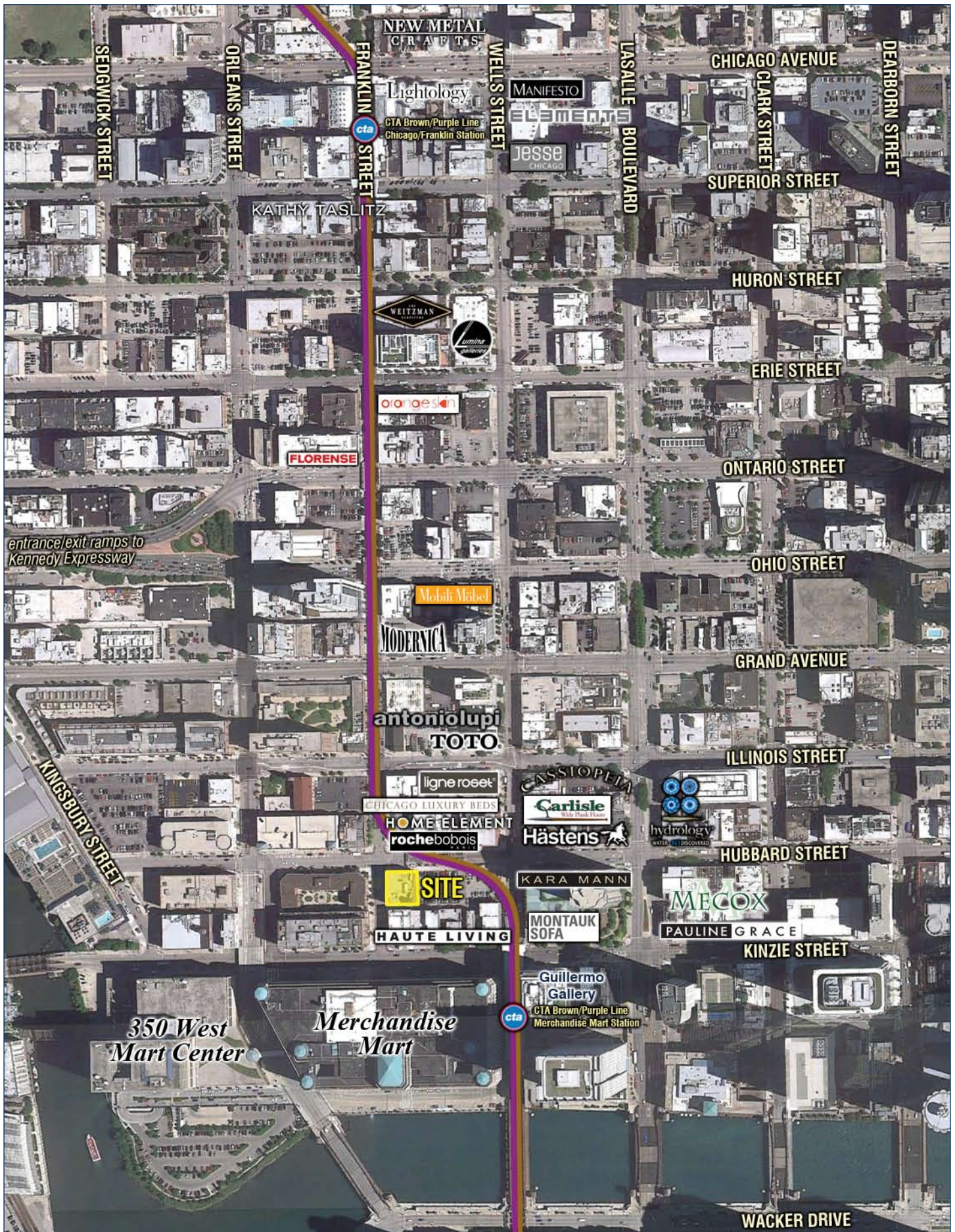
**www.SierraUS.com**  
640 North LaSalle Boulevard • Suite 410  
Chicago, IL 60654  
312.422.7745(fax) • 888.656.7744(toll-free)

# 225 West Hubbard Chicago, IL 60654

Prime Showroom/Office Space Available in the Forefront of the Merchandise Mart



AREA SHOWROOMS

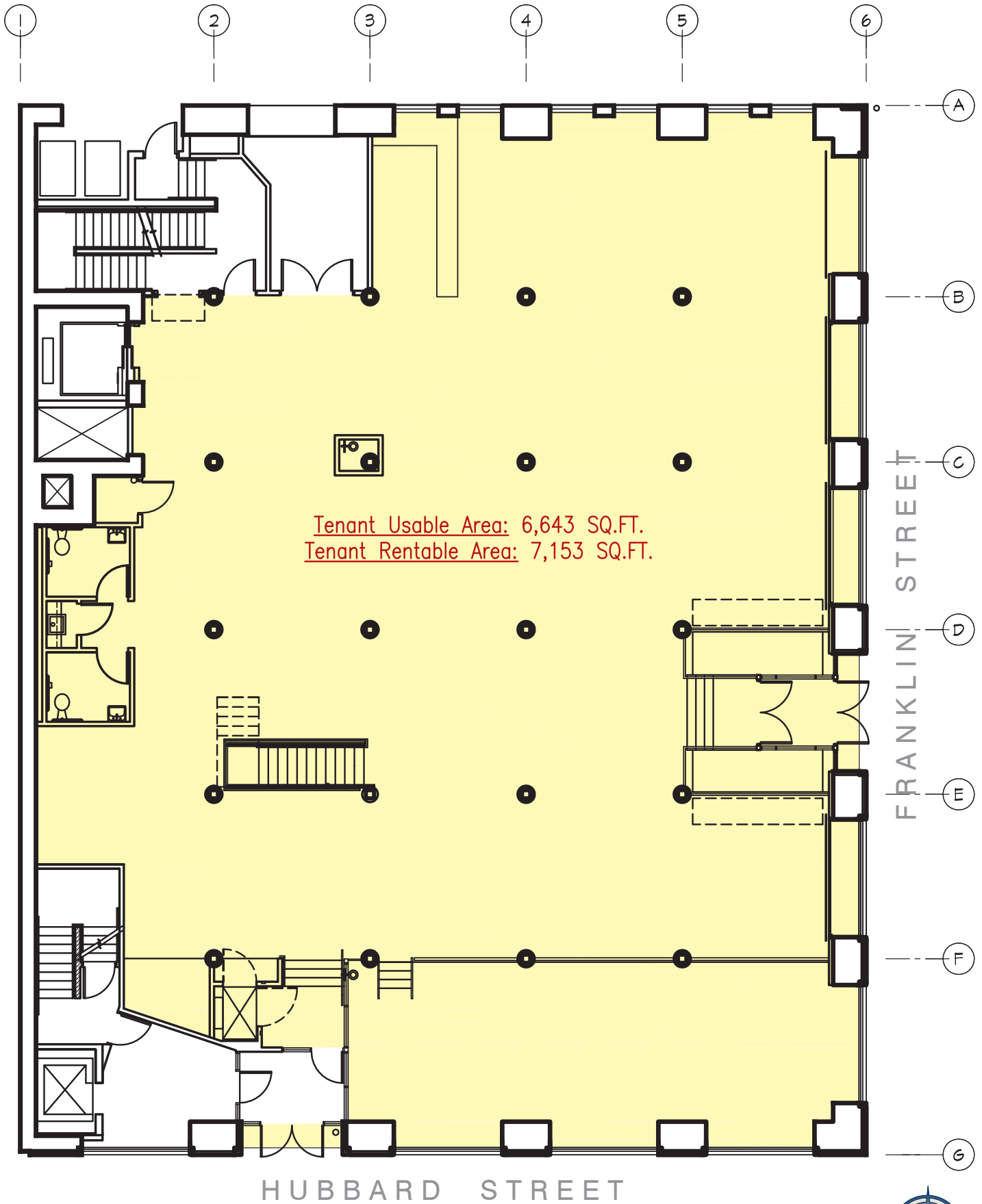


# 225 West Hubbard Chicago, IL 60654

Prime Showroom/Office Space Available in the Forefront of the Merchandise Mart



FLOOR PLANS - FIRST LEVEL

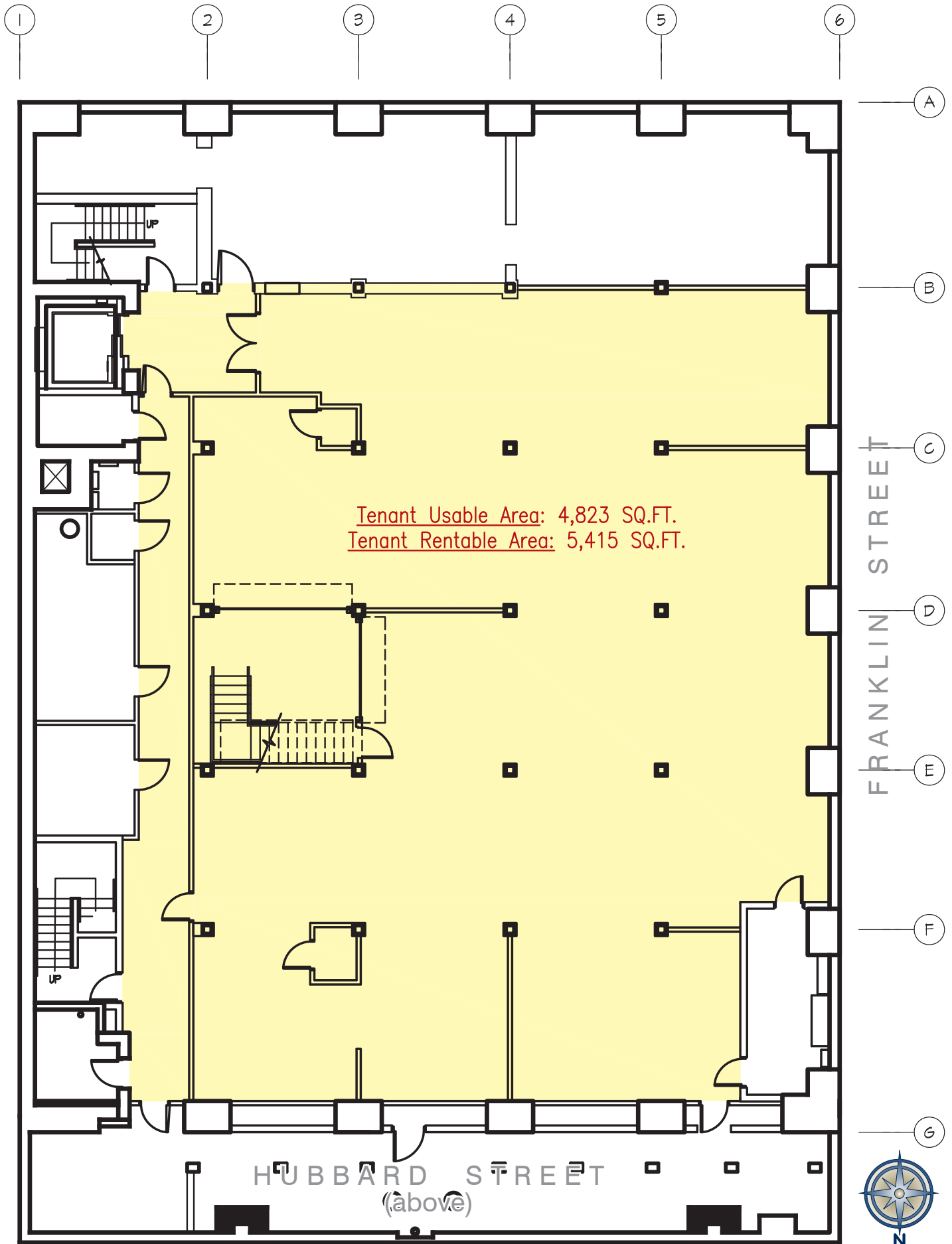


# 225 West Hubbard Chicago, IL 60654

Prime Showroom/Office Space Available in the Forefront of the Merchandise Mart



FLOOR PLANS - LOWER LEVEL

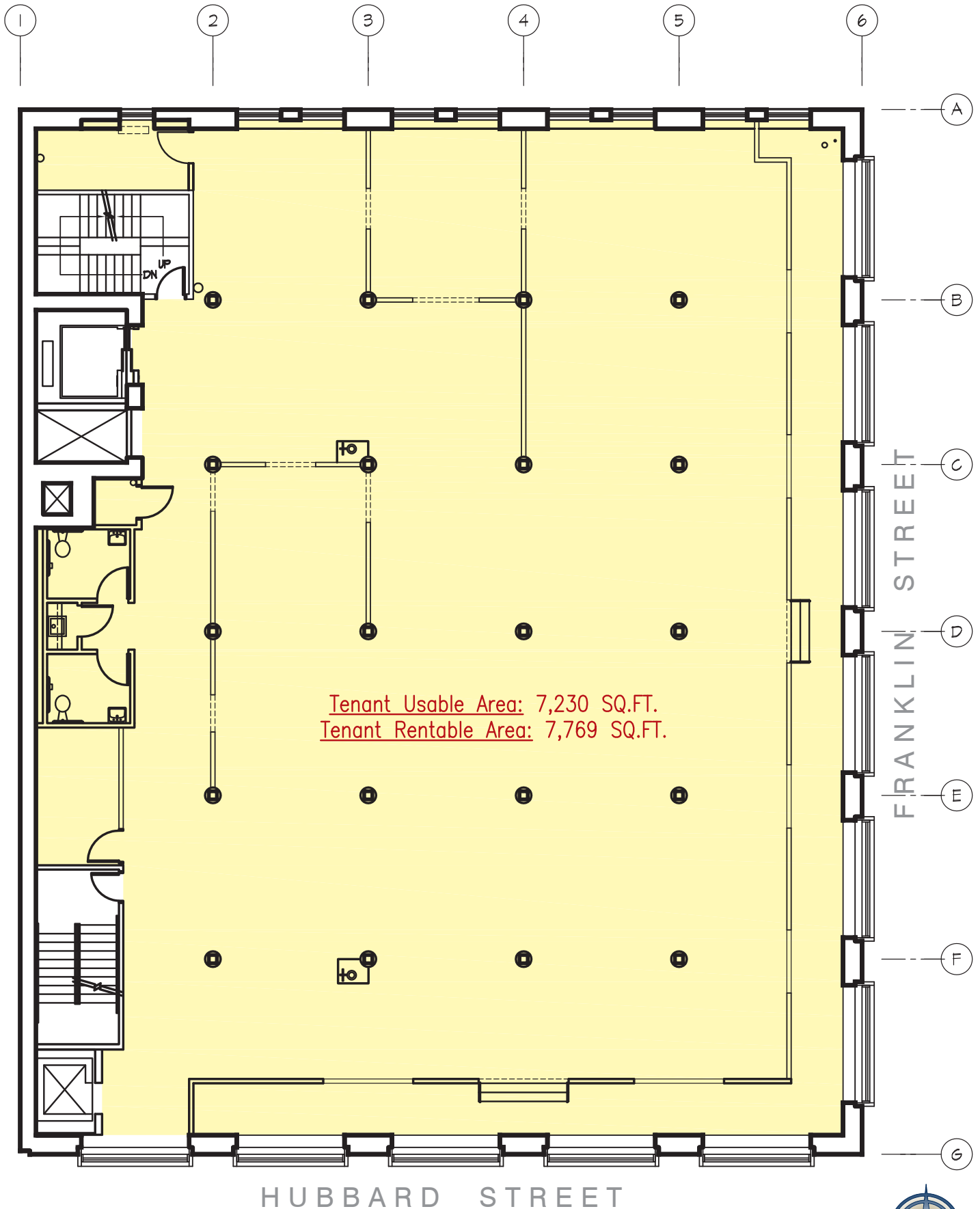


# 225 West Hubbard Chicago, IL 60654

Prime Showroom/Office Space Available in the Forefront of the Merchandise Mart



FLOOR PLANS - SECOND LEVEL

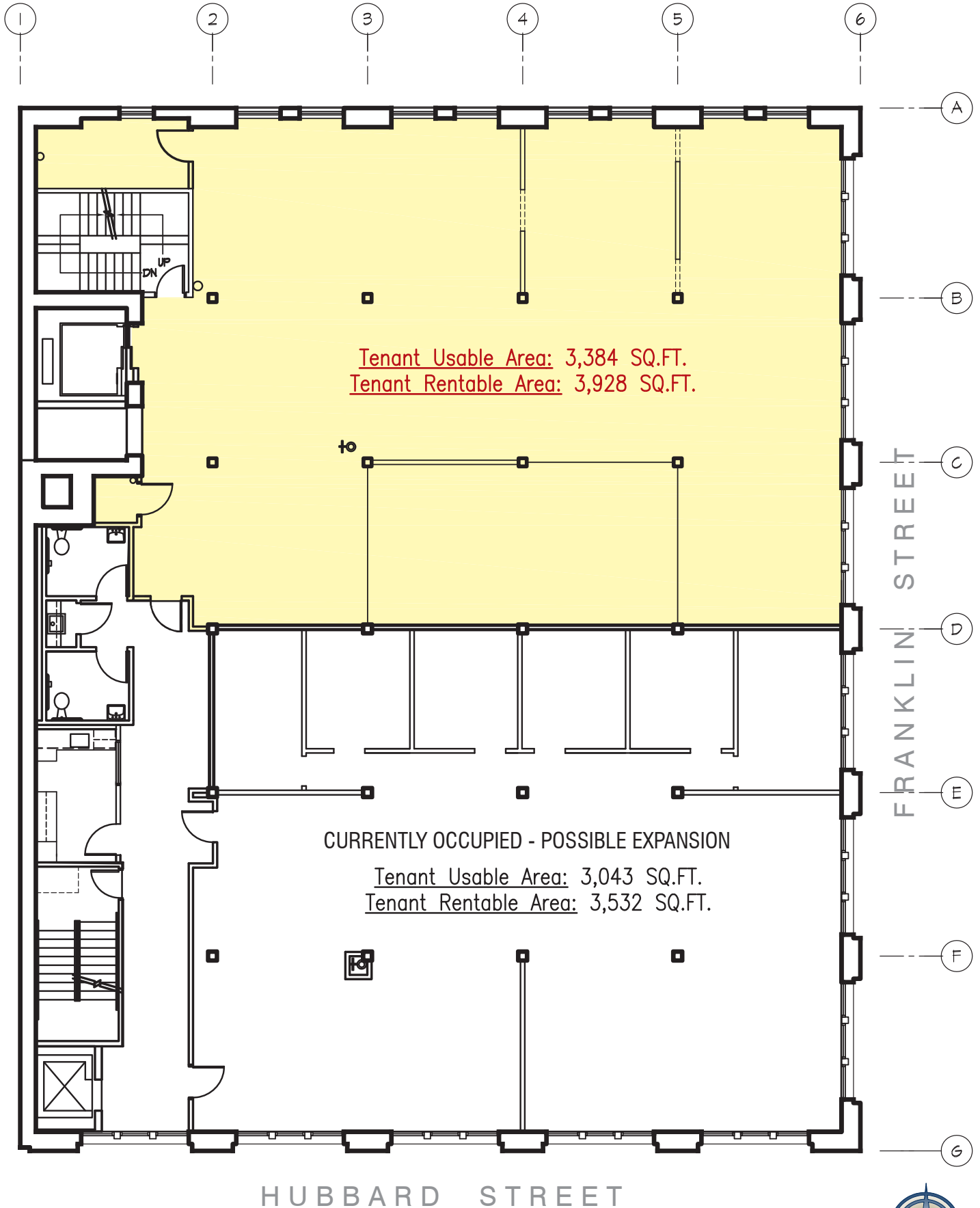


# 225 West Hubbard Chicago, IL 60654

Prime Showroom/Office Space Available in the Forefront of the Merchandise Mart



FLOOR PLANS - THIRD LEVEL



# 225 West Hubbard Chicago, IL 60654

Prime Showroom/Office Space Available in the Forefront of the Merchandise Mart



LOCATION STUDY

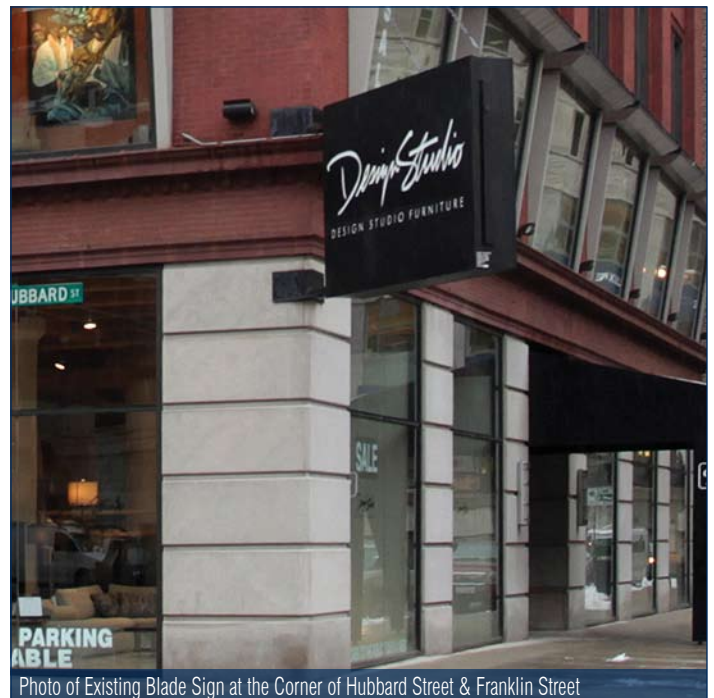
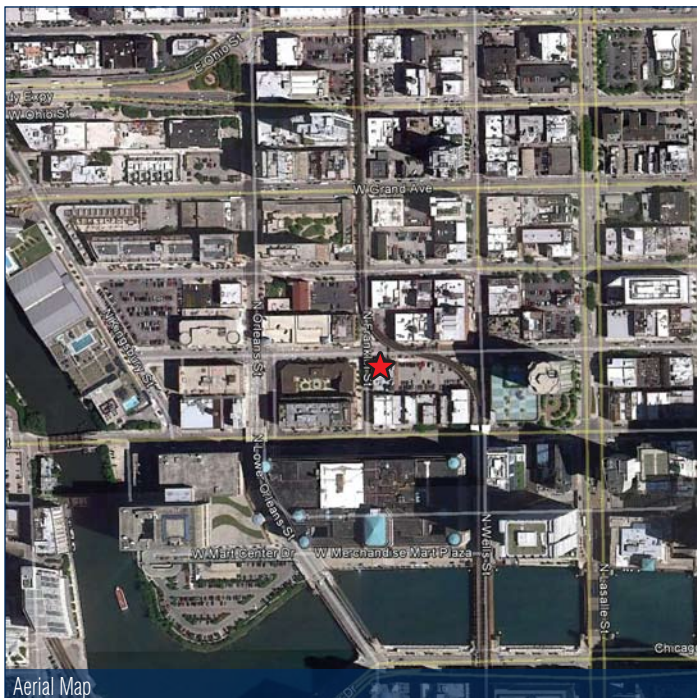


Photo of Existing Blade Sign at the Corner of Hubbard Street & Franklin Street

# FULL PROFILE

1990 - 2000 Census, 2010 Estimates with 2015 Projections  
 Calculated using Proportional Block Groups



Lat/Lon: 41.88984/-87.63535

225 W. Hubbard St. Chicago, IL		0.5 Mile	1 Mile	1.5 Miles
<b>POPULATION</b>	2010 Estimated Population	16,462	75,942	135,656
	2015 Projected Population	27,071	111,929	189,655
	2000 Census Population	8,947	53,667	104,253
	1990 Census Population	4,919	41,433	84,159
	Historical Annual Growth 1990 to 2010	11.7%	4.2%	3.1%
	Projected Annual Growth 2010 to 2015	12.9%	9.5%	8.0%
<b>HOUSEHOLDS</b>	2010 Est. Households	11,208	46,995	80,324
	2015 Proj. Households	18,314	71,187	115,414
	2000 Census Households	6,200	33,559	61,828
	1990 Census Households	3,303	24,512	47,155
	Historical Annual Growth 1990 to 2010	12.0%	4.6%	3.5%
	Projected Annual Growth 2010 to 2015	12.7%	10.3%	8.7%
<b>AGE</b>	2010 Est. Population 0 to 9 Years	6.6%	7.1%	8.2%
	2010 Est. Population 10 to 19 Years	5.2%	6.4%	7.4%
	2010 Est. Population 20 to 29 Years	20.3%	19.9%	18.6%
	2010 Est. Population 30 to 44 Years	35.1%	28.7%	27.5%
	2010 Est. Population 45 to 59 Years	21.2%	22.1%	22.2%
	2010 Est. Population 60 to 74 Years	8.9%	11.4%	11.6%
	2010 Est. Population 75 Years Plus	2.8%	4.4%	4.4%
	2010 Est. Median Age	35.6	37.1	37.1
<b>MARITAL STATUS &amp; SEX</b>	2010 Est. Male Population	52.5%	50.4%	49.6%
	2010 Est. Female Population	47.5%	49.6%	50.4%
	2010 Est. Never Married	47.8%	45.2%	45.6%
	2010 Est. Now Married	33.9%	33.6%	33.5%
	2010 Est. Separated or Divorced	17.0%	17.8%	16.6%
	2010 Est. Widowed	1.4%	3.4%	4.3%
<b>INCOME</b>	2010 Est. HH Income \$200,000 or More	11.7%	13.2%	13.7%
	2010 Est. HH Income \$150,000 to \$199,999	11.8%	11.2%	11.0%
	2010 Est. HH Income \$100,000 to \$149,999	21.9%	18.0%	17.0%
	2010 Est. HH Income \$75,000 to \$99,999	13.2%	11.0%	10.8%
	2010 Est. HH Income \$50,000 to \$74,999	15.0%	13.8%	14.2%
	2010 Est. HH Income \$35,000 to \$49,999	11.3%	11.0%	10.4%
	2010 Est. HH Income \$25,000 to \$34,999	4.6%	5.7%	5.7%
	2010 Est. HH Income \$15,000 to \$24,999	3.5%	5.3%	5.9%
	2010 Est. HH Income \$0 to \$14,999	7.0%	10.8%	11.3%
	2010 Est. Average Household Income	\$124,703	\$121,818	\$123,179
	2010 Est. Median HH Income	\$91,999	\$86,918	\$84,889
	2010 Est. Per Capita Income	\$84,982	\$76,529	\$74,060
2010 Est. Number of Businesses	7,834	25,757	31,182	
2010 Est. Total Number of Employees	157,692	516,341	623,176	

This report was produced using data from private and government sources deemed to be reliable. The information herein is provided without representation or warranty.

# FULL PROFILE

1990 - 2000 Census, 2010 Estimates with 2015 Projections  
 Calculated using Proportional Block Groups



Lat/Lon: 41.88984/-87.63535

225 W. Hubbard St.		0.5 Mile	1 Mile	1.5 Miles
Chicago, IL				
<b>RACE</b>	2010 Est. White Population	78.1%	74.7%	72.7%
	2010 Est. Black Population	11.9%	15.4%	18.9%
	2010 Est. Asian & Pacific Islander	9.2%	9.1%	7.6%
	2010 Est. American Indian & Alaska Native	0.4%	0.3%	0.3%
	2010 Est. Other Races Population	0.5%	0.5%	0.6%
<b>HISPANIC</b>	2010 Est. Hispanic Population	1,692	7,967	15,786
	2010 Est. Hispanic Population Percent	10.3%	10.5%	11.6%
	2015 Proj. Hispanic Population Percent	13.1%	13.6%	14.2%
	2000 Hispanic Population Percent			
<b>EDUCATION (Adults 25 or Older)</b>	2010 Est. Adult Population (25 Years or Older)	13,459	59,558	104,161
	2010 Est. Elementary (0 to 8)	1.2%	2.1%	2.9%
	2010 Est. Some High School (9 to 11)	1.8%	3.1%	3.9%
	2010 Est. High School Graduate (12)	7.1%	8.9%	10.1%
	2010 Est. Some College (13 to 16)	12.5%	13.0%	13.1%
	2010 Est. Associate Degree Only	4.2%	4.3%	4.2%
	2010 Est. Bachelor Degree Only	40.5%	35.2%	34.3%
	2010 Est. Graduate Degree	32.6%	33.4%	31.5%
<b>HOUSING</b>	2010 Est. Total Housing Units	14,184	57,412	96,325
	2010 Est. Owner Occupied Percent	41.9%	35.9%	39.4%
	2010 Est. Renter Occupied Percent	37.1%	45.9%	44.0%
	2010 Est. Vacant Housing Percent	21.0%	18.1%	16.6%
<b>HOMES BUILT BY YEAR</b>	2000 Homes Built 1999 to 2000	13.6%	4.3%	3.0%
	2000 Homes Built 1995 to 1998	8.8%	5.5%	4.9%
	2000 Homes Built 1990 to 1994	6.1%	9.6%	6.6%
	2000 Homes Built 1980 to 1989	17.3%	21.5%	17.2%
	2000 Homes Built 1970 to 1979	10.9%	16.3%	16.7%
	2000 Homes Built 1960 to 1969	11.3%	13.2%	16.0%
	2000 Homes Built 1950 to 1959	5.6%	7.2%	8.6%
	2000 Homes Built Before 1949	26.5%	22.4%	27.1%
<b>HOME VALUES</b>	2000 Home Value \$1,000,000 or More	0.2%	12.8%	15.4%
	2000 Home Value \$500,000 to \$999,999	28.3%	27.4%	29.0%
	2000 Home Value \$400,000 to \$499,999	9.8%	5.7%	10.2%
	2000 Home Value \$300,000 to \$399,999	13.9%	15.9%	10.3%
	2000 Home Value \$200,000 to \$299,999	8.5%	13.7%	15.7%
	2000 Home Value \$150,000 to \$199,999	25.1%	12.2%	10.5%
	2000 Home Value \$100,000 to \$149,999	14.2%	9.3%	6.5%
	2000 Home Value \$50,000 to \$99,999	-	2.9%	2.5%
	2000 Home Value \$25,000 to \$49,999	-	-	-
	2000 Home Value \$0 to \$24,999	-	-	-
	2000 Median Home Value	\$359,166	\$499,323	\$553,945
	2000 Median Rent	\$1,008	\$990	\$926

This report was produced using data from private and government sources deemed to be reliable. The information herein is provided without representation or warranty.

# FULL PROFILE

1990 - 2000 Census, 2010 Estimates with 2015 Projections  
 Calculated using Proportional Block Groups



Lat/Lon: 41.88984/-87.63535

225 W. Hubbard St.		0.5 Mile	1 Mile	1.5 Miles
Chicago, IL				
<b>LABOR FORCE</b>	2010 Est. Labor: Population Age 16+	14,841	68,022	119,154
	2010 Est. Civilian Employed	79.0%	70.6%	69.2%
	2010 Est. Civilian Unemployed	3.5%	5.4%	5.6%
	2010 Est. in Armed Forces	-	-	-
	2010 Est. not in Labor Force	17.5%	24.0%	25.1%
	2010 Labor Force: Males	52.8%	50.5%	49.6%
	2010 Labor Force: Females	47.2%	49.5%	50.4%
<b>OCCUPATION</b>	2000 Occupation: Population Age 16+	6,996	34,784	65,379
	2000 Mgmt, Business, & Financial Operations	34.1%	30.2%	29.9%
	2000 Professional & Related	29.2%	34.4%	32.8%
	2000 Service	6.8%	7.4%	7.8%
	2000 Sales and Office	25.2%	23.8%	24.5%
	2000 Farming, Fishing, and Forestry	-	-	-
	2000 Construction, Extraction, & Maintenance	1.7%	1.2%	1.5%
	2000 Production, Transport, & Material Moving	3.0%	3.0%	3.4%
	2000 Percent White Collar Workers	88.5%	88.4%	87.3%
	2000 Percent Blue Collar Workers	11.5%	11.6%	12.7%
<b>TRANSPORTATION TO WORK</b>	2000 Drive to Work Alone	27.8%	27.4%	30.1%
	2000 Drive to Work in Carpool	5.7%	5.4%	7.0%
	2000 Travel to Work by Public Transportation	22.8%	28.4%	30.3%
	2000 Drive to Work on Motorcycle	-	-	-
	2000 Walk or Bicycle to Work	39.7%	33.0%	26.7%
	2000 Other Means	1.0%	0.8%	0.7%
	2000 Work at Home	3.1%	4.9%	5.2%
<b>TRAVEL TIME</b>	2000 Travel to Work in 14 Minutes or Less	32.8%	32.3%	28.5%
	2000 Travel to Work in 15 to 29 Minutes	38.8%	39.0%	40.0%
	2000 Travel to Work in 30 to 59 Minutes	18.9%	20.5%	23.2%
	2000 Travel to Work in 60 Minutes or More	9.5%	8.2%	8.3%
	2000 Average Travel Time to Work	24.1	22.5	23.4
<b>CONSUMER EXPENDITURE</b>	2010 Est. Total Household Expenditure	\$928 M	\$3.79 B	\$6.53 B
	2010 Est. Apparel	\$45.0 M	\$184 M	\$318 M
	2010 Est. Contributions & Gifts	\$69.7 M	\$290 M	\$501 M
	2010 Est. Education & Reading	\$30.5 M	\$127 M	\$218 M
	2010 Est. Entertainment	\$52.4 M	\$214 M	\$368 M
	2010 Est. Food, Beverages & Tobacco	\$140 M	\$572 M	\$987 M
	2010 Est. Furnishings & Equipment	\$43.0 M	\$175 M	\$301 M
	2010 Est. Health Care & Insurance	\$63.5 M	\$260 M	\$448 M
	2010 Est. Household Operations & Shelter & Utilities	\$280 M	\$1.14 B	\$1.97 B
	2010 Est. Miscellaneous Expenses	\$15.1 M	\$61.6 M	\$106 M
	2010 Est. Personal Care	\$13.4 M	\$54.5 M	\$93.8 M
	2010 Est. Transportation	\$176 M	\$708 M	\$1.22 B

This report was produced using data from private and government sources deemed to be reliable. The information herein is provided without representation or warranty.